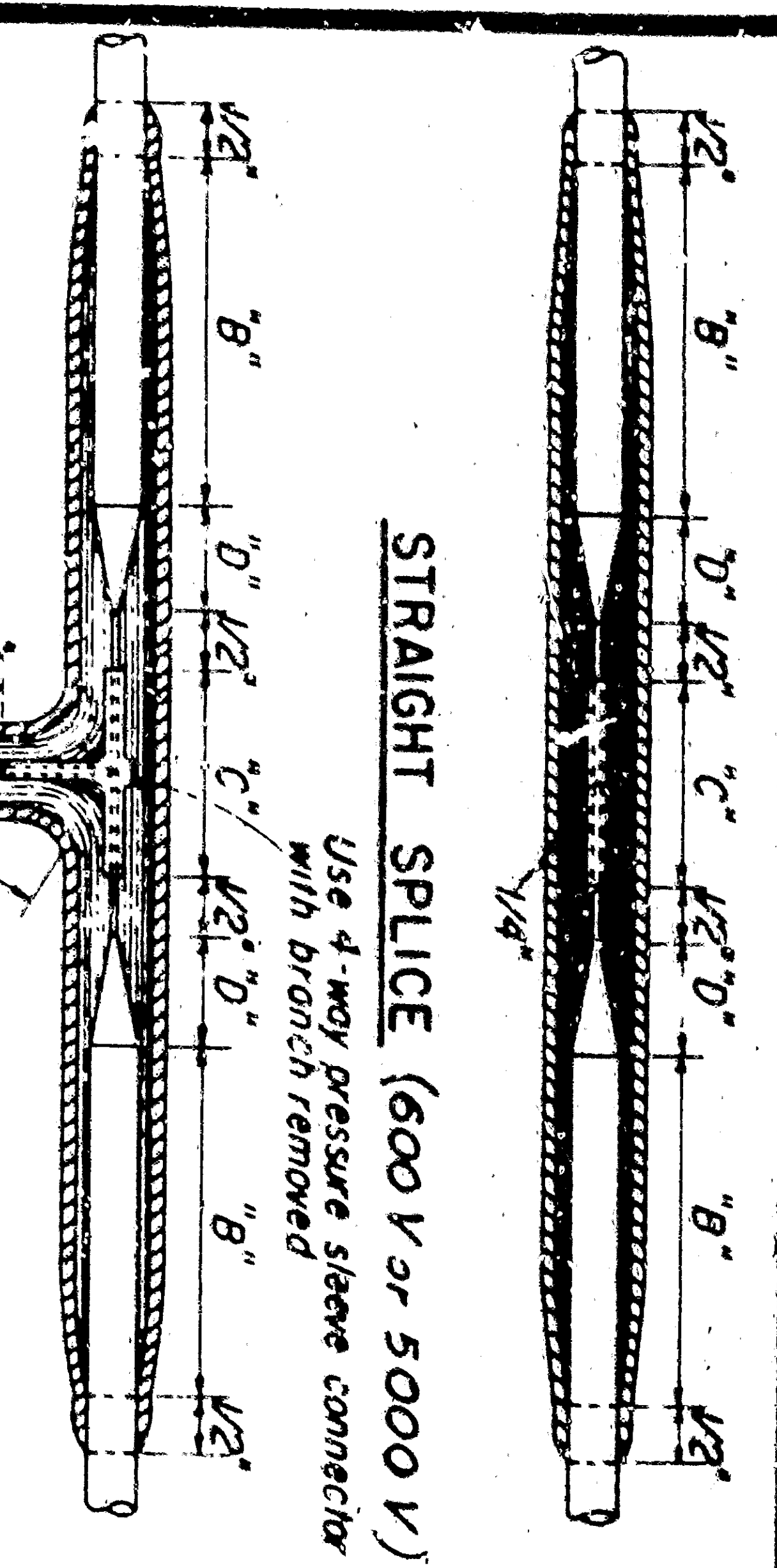


DATE	SCALE	DESIGNED BY	CHECKED BY

APPROVED: January 9, 1959

TRAFFIC ENGINEER ONE ENGINEER LICENSE NO. 10000

TO ACCOMPANY PLANS DATED:

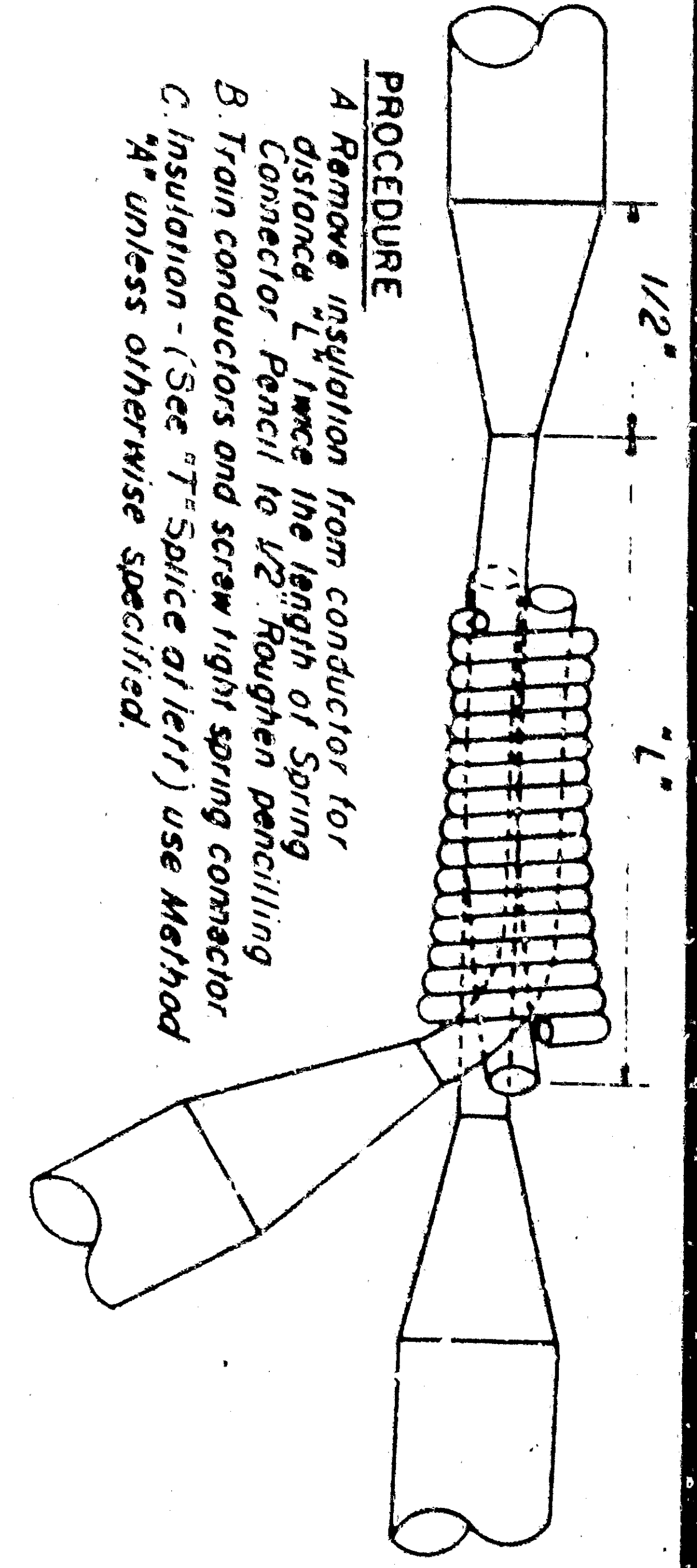


STRAIGHT SPLICE (600 V or 5000 V)

STRAIGHT SPLICE DIMENSIONS - inches	
AWG	1/2"
600 Volt 14, 12 or 10 Solid	2"
600 Volt 8, 6 or 4 Stranded 2 1/2"	1 1/2"
5000 Volt 8 Solid	3 1/4"
T-SPLICE - DIMENSIONS - inches	
AWG	2"
600 Volt 14, 12, or 10 Solid	1 1/2"

600 VOLT "T" SPLICE
(Up to 10 AWG only)

PROCEDURE:
A Remove insulation from each conductor to distance 1/2 C+1/2 and pencil to dimension D. Roughen penciling.
B Train conductors and place connector, centering over butted cable ends.
C Crimp and solder connector.
D Insulate according to Method "A" unless otherwise specified.

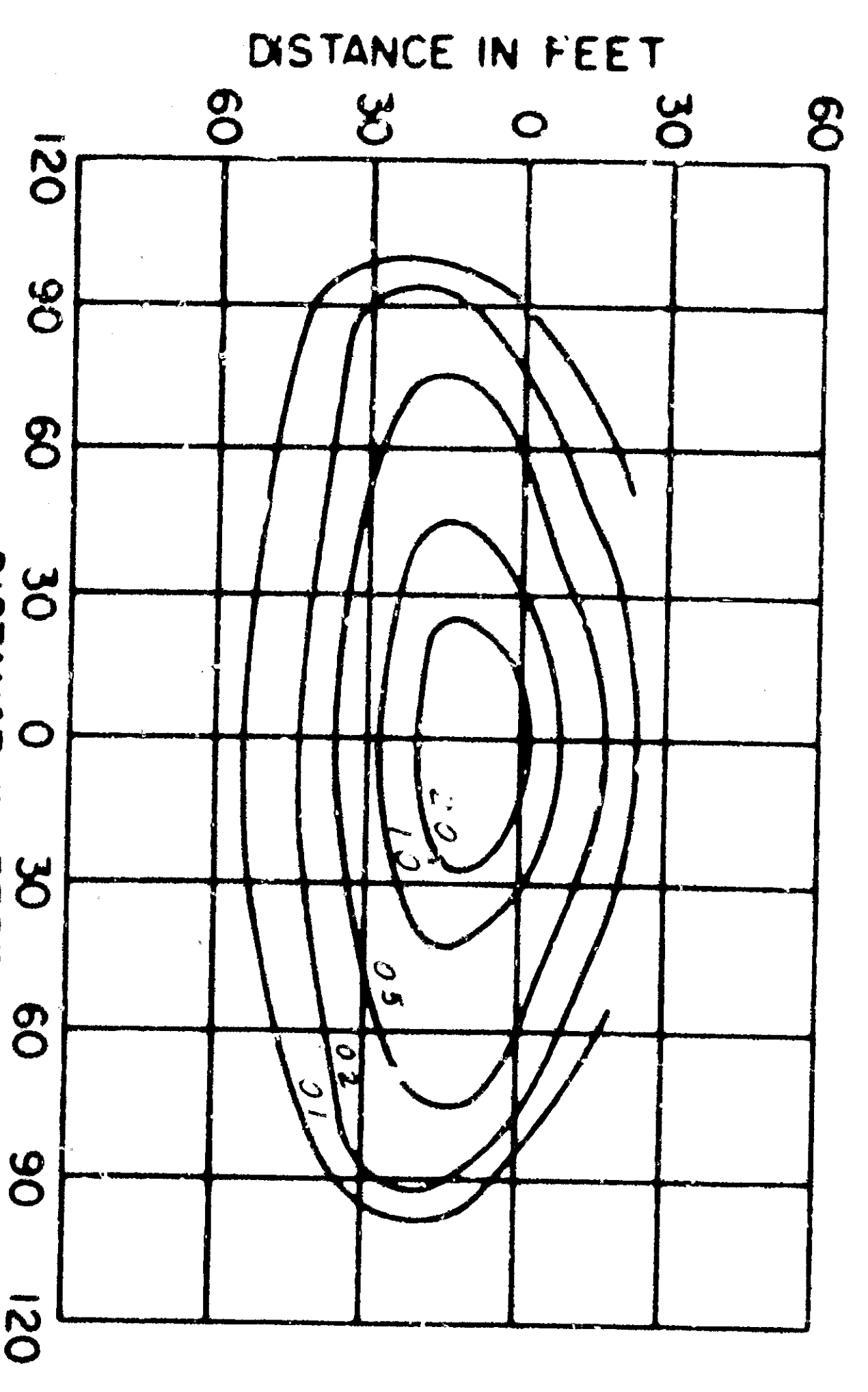


ALTERNATE 600 VOLT "T" SPLICE ELECTRICAL SPRING CONNECTOR

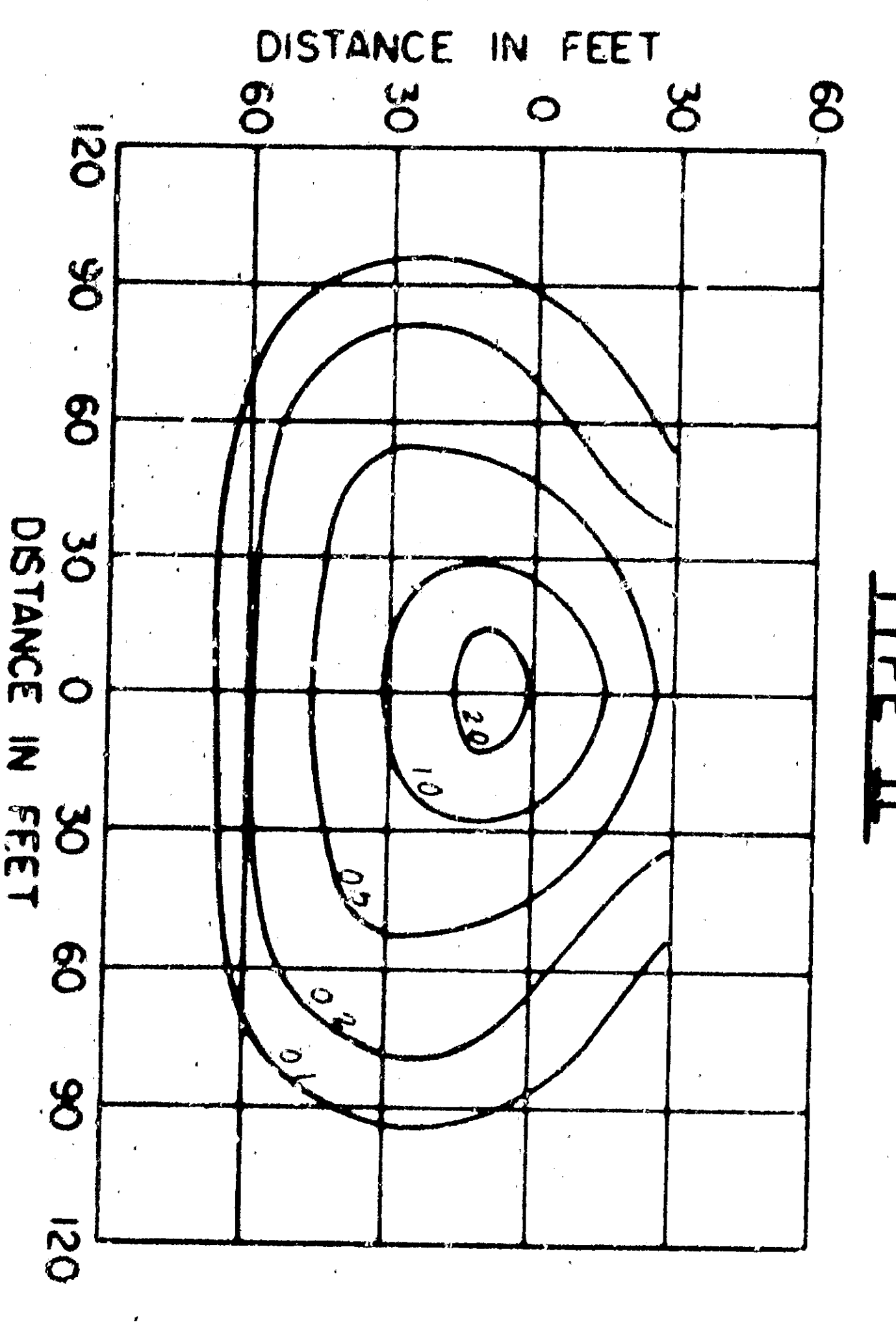
INSULATING METHOD "A"

- Apply one coat of tape to conductor, overlap 1/2 inch.
- Apply second layer of tape, overlap 1/2 inch.
- Apply third layer of tape, overlap 1/2 inch.
- Apply fourth layer of tape, overlap 1/2 inch.
- Apply fifth layer of tape, overlap 1/2 inch.
- Apply sixth layer of tape, overlap 1/2 inch.
- Apply seventh layer of tape, overlap 1/2 inch.
- Apply eighth layer of tape, overlap 1/2 inch.
- Apply ninth layer of tape, overlap 1/2 inch.
- Apply tenth layer of tape, overlap 1/2 inch.

SPLICING DETAILS

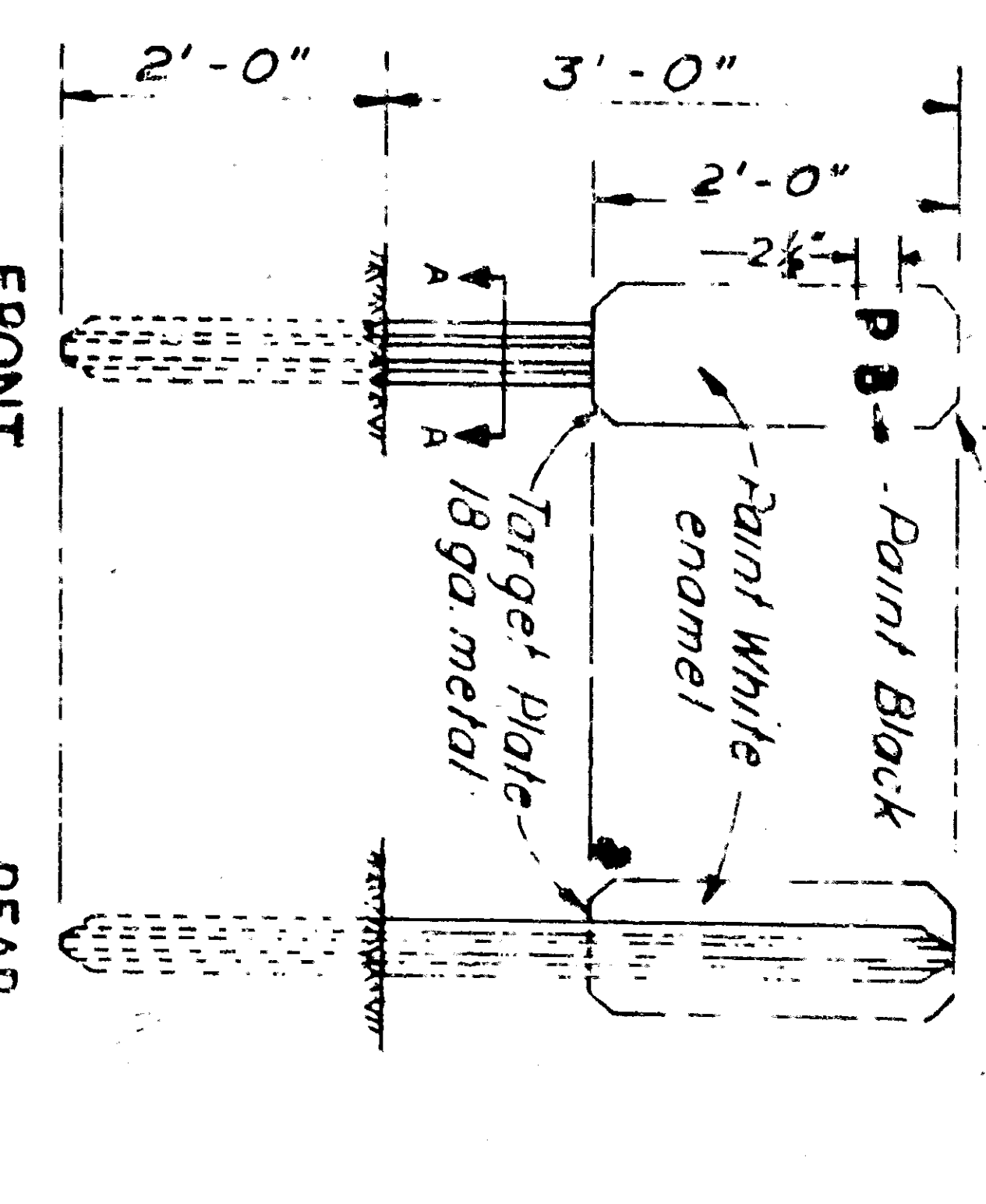


TYPE II



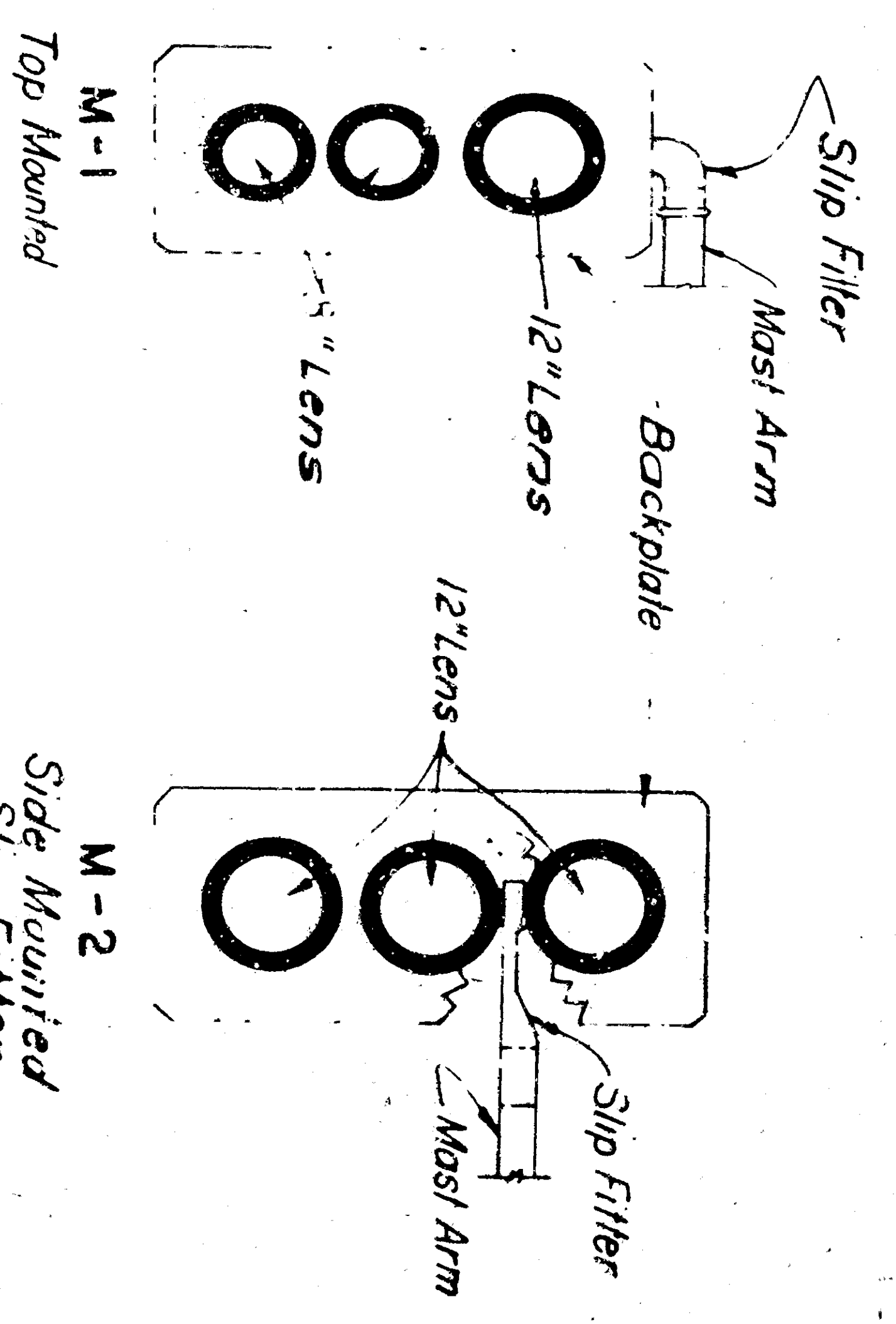
TYPE III

Shielded Highway Lighting Luminaire 30' Mounting Height,
20,000 Lumen Mercury Vapor Lamp
ISOLUX LINES OF MINIMUM HORIZONTAL FOOT CANDLES

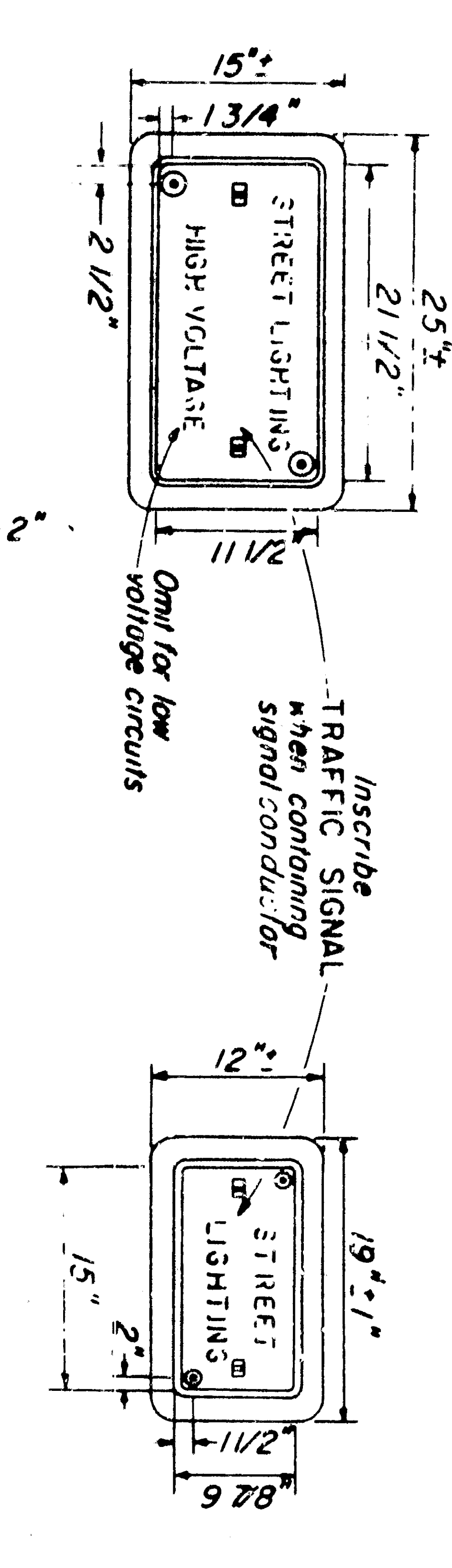


PULL BOX MARKER

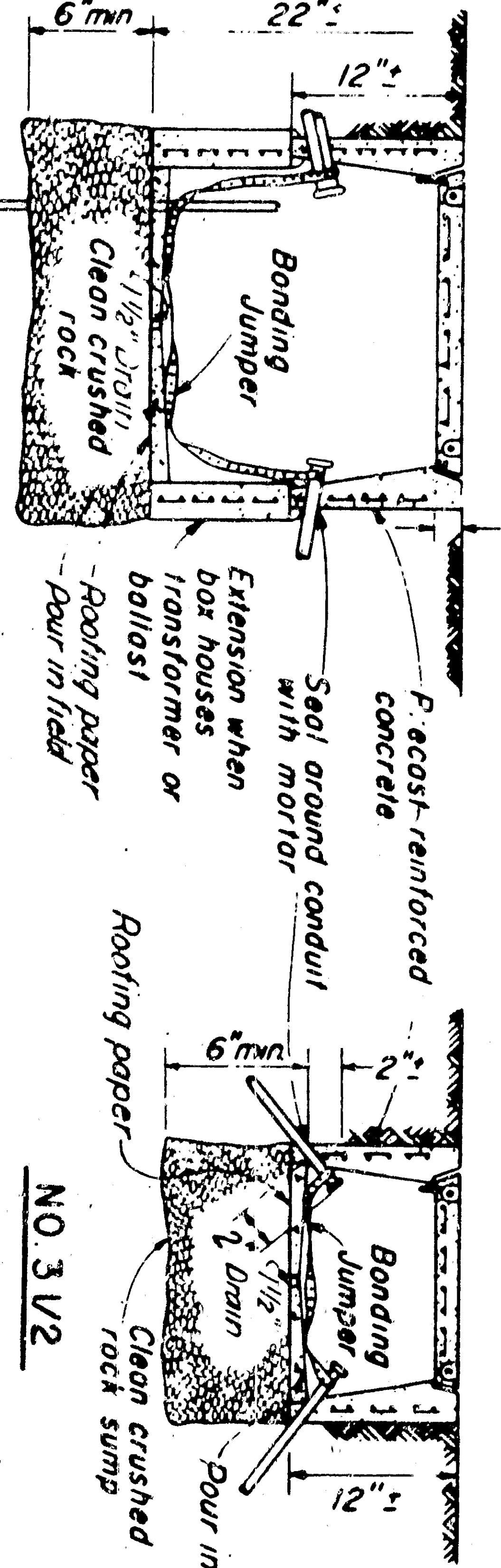
MAST ARM MOUNTING



NO SCALE



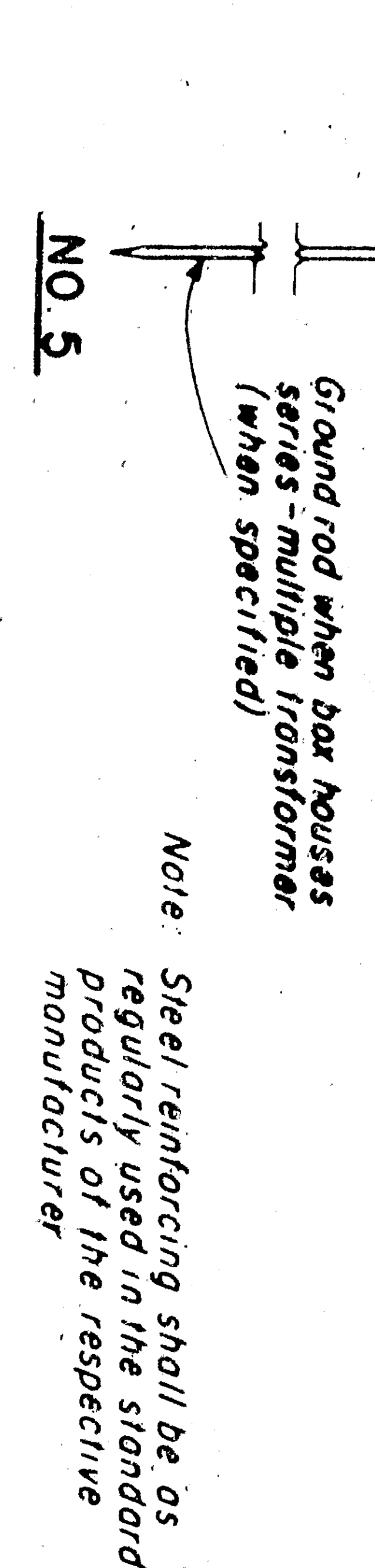
TRAFFIC SIGNAL



SLIP FITTER FOR POST TOP MOUNTING

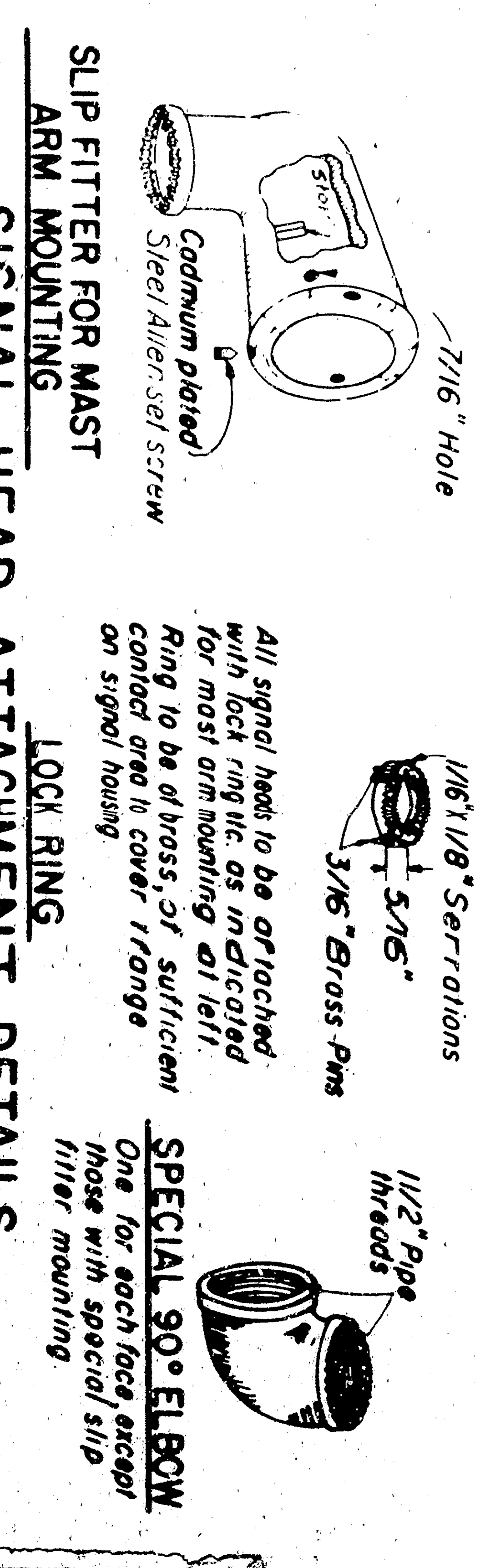
PULL BOXES

NO SCALE



NO. 5

Note: Steel reinforcing shall be as regularly used in the standard manufacturer's.



SLIP FITTER FOR MAST ARM MOUNTING

STATE OF CALIFORNIA
DEPARTMENT OF PUBLIC WORKS
DIVISION OF HIGHWAYS
STANDARD DETAILS NO. 3
TRAFFIC SIGNAL AND
HIGHWAY LIGHTING
INSTALLATIONS
SCALE AS NOTED
REV DATE 6-1-59
DRAWING NO. 3